



AGUZ 62

2011 AGUZ MARINE

62ft

Basics

Manufacturer:	AGUZ MARINE
Model:	Aguz 62
Year Built:	2010
Model Year:	2011
Type of Yacht:	Power
Base Price:	\$2,880,000
Condition:	New - Build
Status:	Available for Sale
Listing Date:	5/6/2010

The Aguz 62 is produced with the latest state of the art technology. Its hull is made of composite monocoque structure of Divinycell.

Dimensions & Specifications

Manuf. Length:	62'
Draft:	3'9
Beam:	25'6
Heads:	2
LWL:	62'
Berths:	2

Location

Location: Sao Paulo, Brazil

Hull and Deck Configuration

Hull Material: Composite
Hull Configuration: Catamaran

Approximate Capacities and Speeds (Knots)

Fuel Capacity:	6000
Water Capacity:	18000
Approx. Cruise Speed:	20
Approx. Max Speed:	25

Weight

WORLDWIDE SEARCH TOOLS

Can't find the catamaran, multihull or boat you want above?
Click below to use our worldwide search tools. [Search Sailing Catamarans for Sale & Multihulls](#)

Engines

	Manufacturer	Model	Engine Fuel Type	H.P.	Engine Type	Year	Approx. Hours
#1	Caterpillar	C9 9.3L DIESEL	Diesel	350		2011	0
#2	Caterpillar	C9 9.3L DIESEL	Diesel	350		2011	0

Generator

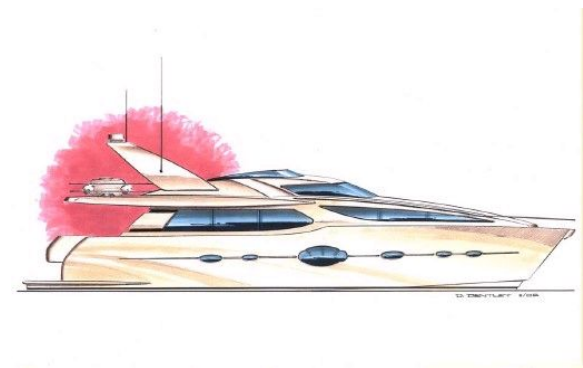
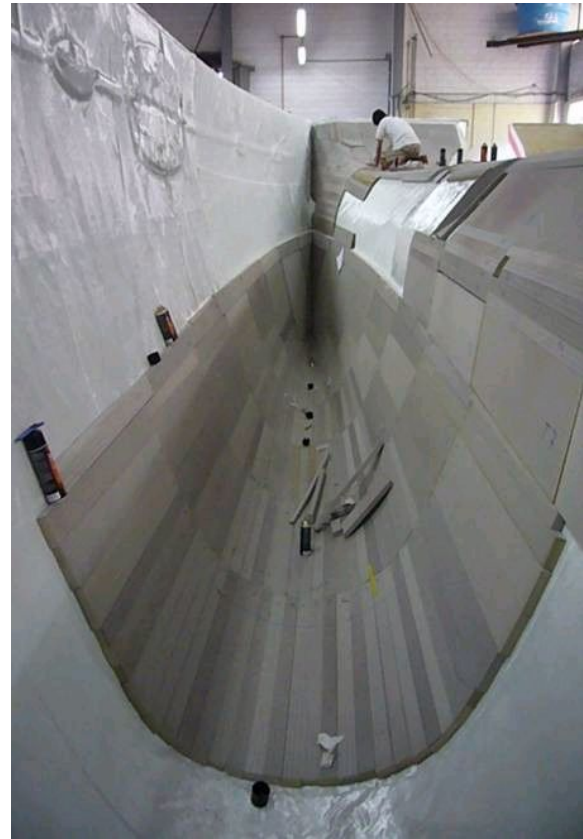
Manufacturer	Model	Size	Hours
Norpro	17kw	0	0

Boat Highlights

The Aguz 62 is produced with the latest state of the art technology. Its hull is made of composite monocoque structure of Divinycell. It has a 5-year warranty for structural and osmosis.

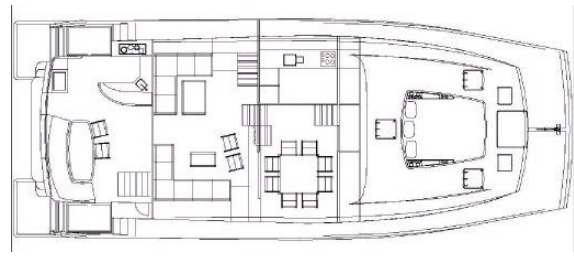
Your family and guests will enjoy cruising at 23 knots with comfort and quality, which can only be offered by its semi-movement multihulls that represents the latest state of the art technology. No monohull is able to match the softness of navigation, stability and efficiency. The design is Aguz 62, from world-renowned yacht designer Scott Jutson. Recognized leader in nautical technology.

With high and spacious interior, the Aguz 62 combines luxury with a range of 1,200 nautical miles. With better Stability and remarkable fuel consumption of 30% to 50% lower when compared with monohulls in its class. The new Aguz 62 design, envision future yacht designs.



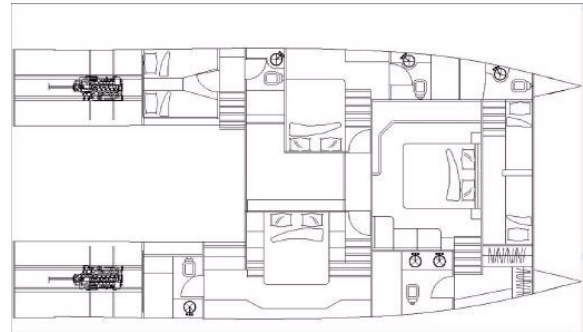
Layout & Accommodations

The spacious Master Suite is paralleled only in much larger yachts. In the level below are the closet and bathroom with tub, double whirlpool or double box.



The lay-out pattern of the Flybridge offers hydro bath, two chaise lounge and full snack bar, and comfortable sofa with folding table. The charming main deck splits into two levels and offers all necessary comfort for long cruises with spacious living room, home theater, private dining room with panoramic views and full kitchen. The square stern, completely protected from the sun, offers a pleasant opportunity with ample room gourmet snack bar, 4 burner stove and grill.

The large flybridge with 132 f area can carry the dinghy with the option of installing crane to 882 pounds. The loading and unloading is facilitated by their own access with retractable catwalk (optional).



Deck & Equipment

- Flybridge with spa and bar snacks.
- Gourmet's Square Popa with sink, ceramic hob and grill.
- Booth Hall and Master Home Theater Surround sound system CD / DVD.
- Full Kitchen: Freezer, Refrigerator, Microwave / oven, ceramic stove, dishwasher.
- Air Conditioner.
- LCD TV in all cabins
- System of hot and cold water in all locations.
- Sanitary electric water system with black.
- Silent Diesel Generator
- Outlet pier with inverter / charger.
- Anchor winch with dual control.
- Command maneuver the stern.



Power steering, sounder, Radar, Chartplotter w / GPS
VHF radio.
Washer / dryer.
Lighthouse Proa with remote control
An automatic fire-extinguishing in powerhouse.

Disclaimer

The Company offers the details of this vessel in good faith but cannot guarantee or warrant the accuracy of this information nor warrant the condition of the vessel. A buyer should instruct his agents, or his surveyors to investigate such details as the buyer desired validated. This vessel is offered subject to prior sale, price change, or withdrawal without notice. Photos may not properly reflect the current condition of the actual vessel offered for sale. In some cases stock photographs may have been used.
